



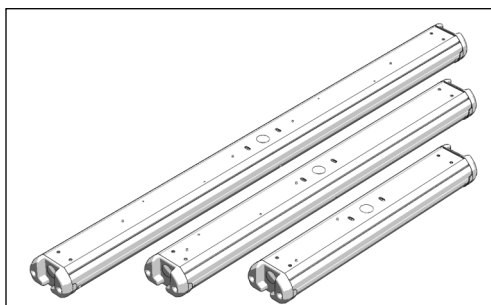
# Installation & Maintenance Manual

## SLD-LN-XXXX Linear LED Lighting System

### IMPORTANT SAFETY INSTRUCTIONS *Mesures de Sécurité à Respecter*

This product must be installed in accordance with the applicable installation code by a person familiar with the construction and operation of the product and the hazards involved.

*Ce produit doit être installé selon le code d'installation pertinent, par une personne qui connaît bien le produit et son fonctionnement ainsi que les risques inhérents.*



#### Brief Introduction

Installation instructions for the Linear LED luminaire via Suspension, Surface, or Pendant Stem. For the more comprehensive guide

**Surface/Pendant LED Luminaire—Certified to Canada/US Standards**  
**CSA C22.2 No. 250.0**  
**UL1598, 3rd Edition**

**Suitable for Dry and Damp Locations.** *Convient aux emplacements humides.*

**Pendant Mount this luminaire using only the mounting hardware supplied by the manufacturer or similar.** *Installer ce luminaire comme lustre en utilisant seulement la quincaillerie fournie par le fabricant ou une quincaillerie similaire.*

**Min 90°C supply conductors.** *Les fils d'alimentation doivent convenir pour 90°C.*

**Caution—risk of shock.** *Attention—risque de choc.*

**Dismount luminaire for maintenance.** *Démonter luminaire pour l'entretien.*

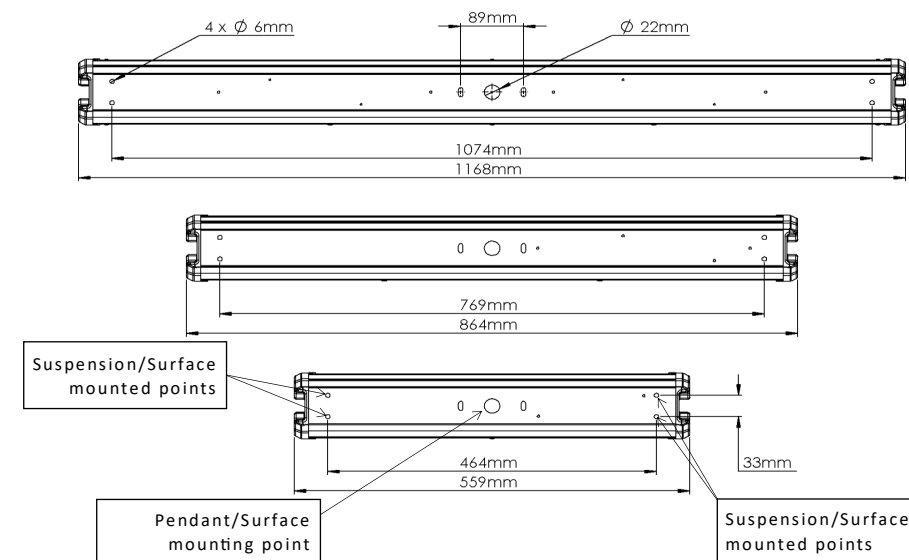
**Not for use in dwellings.** *Ne pas utiliser dans les logements.*

**Always keep protective plastic plug-barrier in place.** *Jamais ne pas enlever protecteur-bouchon en plastique.*

**Always keep protective metal plate and screws in place, remove only when necessary.** *Jamais ne pas enlever protecteur-plaque métallique et vis, ne retirer que si nécessaire.*



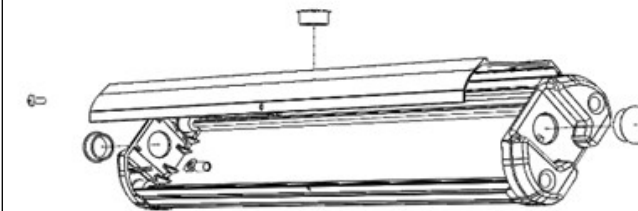
### Basic Dimensions and Hole Pattern Location



### Wiring Instructions

Enclosure must be closed and secured by supplied screws to complete the installation or servicing of the luminaire.

Metal knock out plugs must be secured into unused luminaire openings.



Wiring may be terminated within the enclosure, or may terminate at the junction box remote from the luminaire.

Ensure the enclosure is properly grounded to earth ground.

Be aware of potential hazards when installing or servicing.

Wiring from LED  
Engine to LED Driver



LED V+ Output from LED Driver (Black)

LED V- Output from LED Driver (Red)

Wiring from LED  
Driver to AC Supply, or  
LED Driver Terminal  
Block Colouring

AC/Line 100/277/347/480V Supply Connection (Black)

AC/Neutral Connection (White)

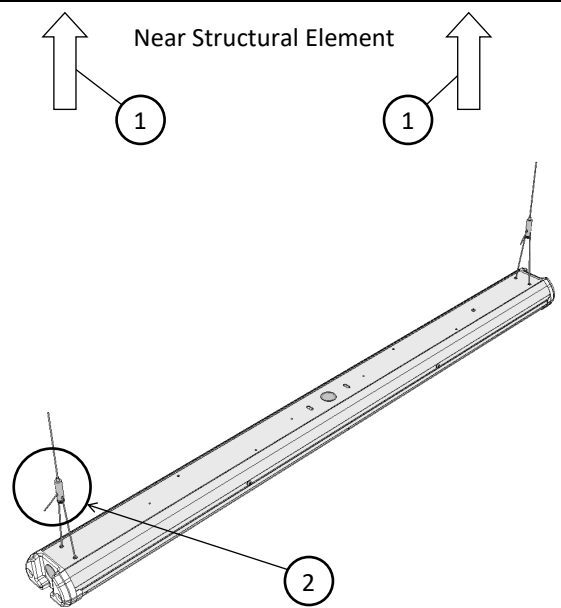
Earth Ground Connection (Green)

Wiring for 0-10V  
Dimming

Dim + Connection (Violet, or as Labeled)

Dim - Connection (Grey, or as Labeled)

**Suspension Kit Installation**



1 Near Structural Element

2

1 Loop around appropriate structural element.

2

A

Supplied Hardware:

- Cable to loop around structure
- Gripper Assembly, pre-assembled to luminaire

Slide the Cable through the top of the Gripper Assembly. Gripper allows cable to move in one direction only.

To slide cable in opposite direction, hold down the top of Gripper (see point A). Once adjustment is complete, release the top of the Gripper. The Gripper will secure then secure the Cable from slipping out.

Tie up and secure the excess cable.

Part of the suspension kit is assembled into the light fixture. However, if for some reason the suspension kit is not completely assembled into the fixture, follow the following procedure to reattach the cable into the luminaire.

Please, do not disassemble the cable gripper. Critical components may dislodge from their normal position and may cause the cable gripper to be faulty.

For all other issues regarding installation of the suspension kit, please contact Lumingen Technologies.

1 Top of Fixture

Ø6.4mm Hole

2 Top of Fixture

3 Inside of Fixture

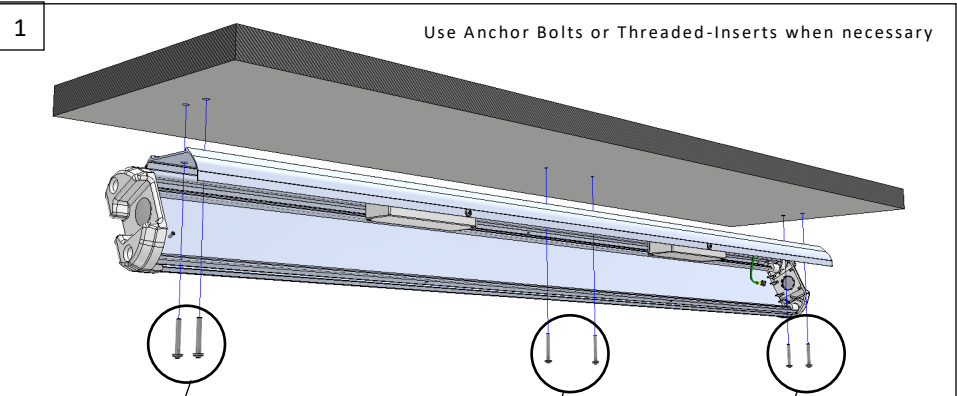
Normal Seated Position

Ensure all metal conduit plugs are in-place in unused openings.

**Surface Mounting Installation**

1

Use Anchor Bolts or Threaded-Inserts when necessary

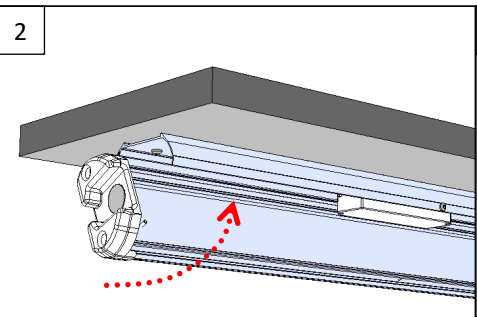


Option 1: #10 Screws Recommended

Option 2: #10 Screws recommended or the appropriate fastenings for installing onto and covering the junction box.

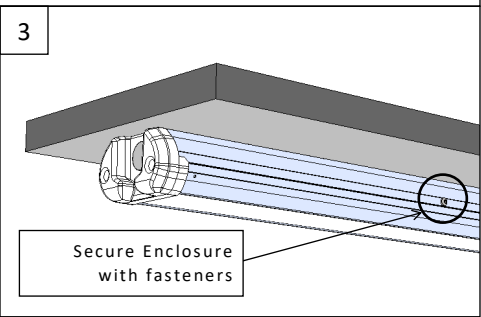
Option 3: #10 Screws Recommended

2



Secure Enclosure with fasteners

3



Ensure all metal conduit plugs are in-place in unused openings.